



ENFORCER

MANUAL

Configuring your MikroTik as a Bolt-on LucidView Enforcer

Version 7

Table of Contents

BOLT-ON LUCIDVIEW ENFORCER	2
Guide version	2
About	2
Standard vs. Bolt-On Enforcer	2
GENERATING & DOWNLOADING THE LUCIDVIEW ENFORCER SCRIPT FOR YOUR MIKROTIK ROUTER	2
APPLY LUCIDVIEW ENFORCER SCRIPT TO MIKROTIK ROUTER	5
Connecting to the MikroTik Router	5
UPLOAD THE CONFIGURATION SCRIPT TO THE MIKROTIK ROUTER	8
RUN LUCIDVIEW ENFORCER SCRIPT	9
SPECIAL CASES	11
Existing VPN for Internet access	11
VLAN	11
TEST THE MIKROTIK	11
Check connectivity of the MikroTik from the LucidView Portal	11
LOGIN TO ENFORCER TO CONFIGURE	12

BOLT-ON LUCIDVIEW ENFORCER

Guide version

Please visit <http://www.lucidview.net/making-enforcers/> to make sure you have the latest version of this Install guide. **This guide is version 7**

About

Access to the [LucidView Enforcer Portal](#) will allow you to configure any [MikroTik router](#) running RouterOS to make use of the LucidView Content Filter, and give access to the powerful LucidView Reporting engine on the Internet traffic flowing through the MikroTik router.

We call such a configured MikroTik a [LucidView Enforcer™](#).

Standard vs. Bolt-On Enforcer

<http://www.lucidview.net/making-enforcers/>

It is very important to understand the difference between a Standard vers a Bolt-on Enforcer, as described in the link above

GENERATING & DOWNLOADING THE LUCIDVIEW ENFORCER SCRIPT FOR YOUR MIKROTIK ROUTER

Once you have registered your organisation and logged in, you will be directed to the Welcome page. (See image below)

Days Remaining in Free Trial : 14
Make permanent now, to ensure uninterrupted service.

Welcome, Demo

Welcome to managing absolute insight.

Please select an option from the top right hand side menu, or from the buttons below.

Basic tasks include:

- Viewing all, or claiming an enforcer.
- Change or update basic information, and request new API tokens.
- Managing Personalised branding
- Logging into the LucidView Dashboard, for access to all available data.

Please read and understand [this document](#) before attempting to create any new Enforcers.

[View Enforcers](#) [Reseller Profile](#) [Personalised Branding](#) [Dashboard Access](#)

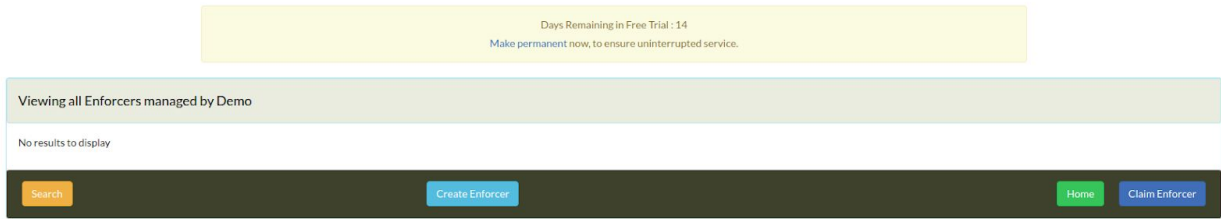
- Viewing all, or claiming an enforcer.
- Change or update basic information, and rec
- Managing Personalised branding
- Logging into the LucidView Dashboard, for a

Please read and understand [this document](#) before :

[View Enforcers](#)

Click on the **View Enforcer** button as per the image above.

Click on **Create Enforcer** button



Fill in all the relevant information as per the image below, then click **Create**:

NB: Be sure to select the Bolt-on Enforcer options

Creating New Enforcer

VPN IP: 10.0.1.219 Mikrotik Router SN: 987654321123 DNS Locale: ZA

Enforcer Type: Bolt-On Allow Remote Management:

Enforcer Administrator Email(Optional): demo@lucidview.net Claim Enforcer (Administrator Email Required):

Friendly Name: Demo 2

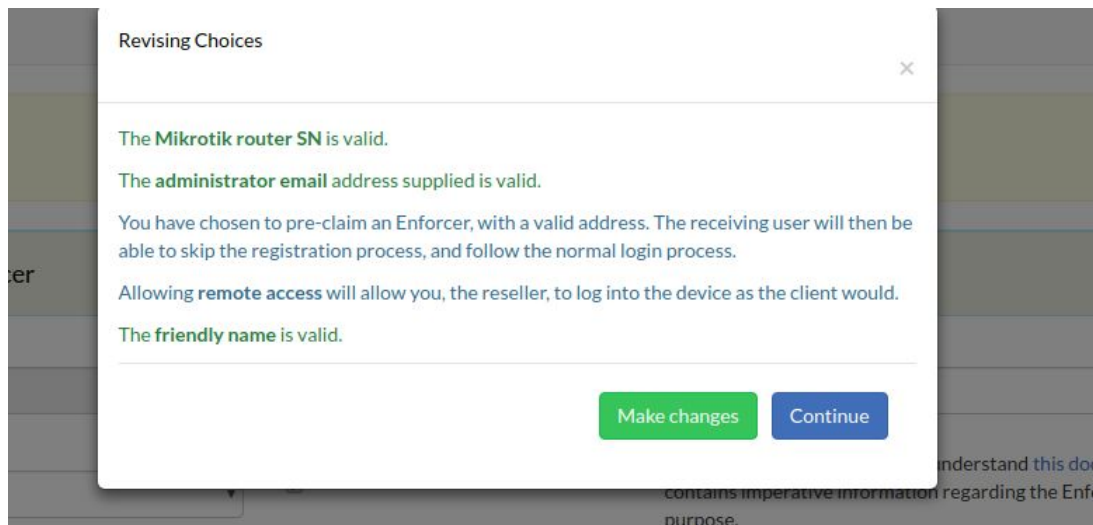
Ensure that you have read, and understand [this document](#) as it contains imperative information regarding the Enforcer type, and it's purpose.

Please note: You may enter an administrative address here, and chose to produce the Enforcer, pre-claimed.

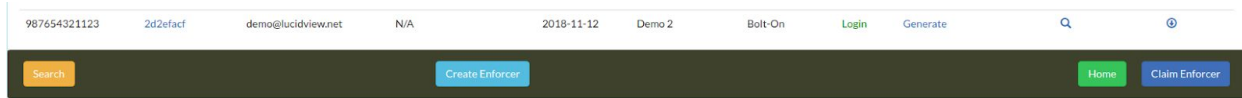
Populating this name input, will provide and additional reporting field, and a more personalised look and feel.

Back Create

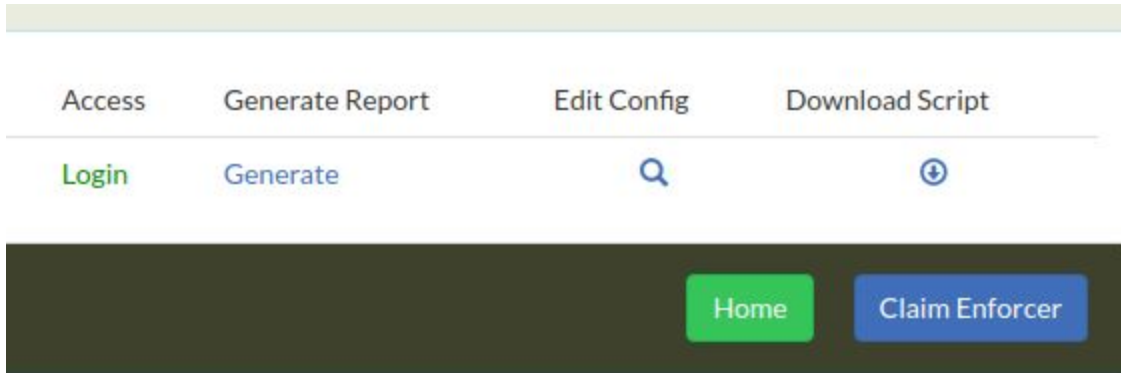
A pop up will appear to confirm all the details. Click continue.



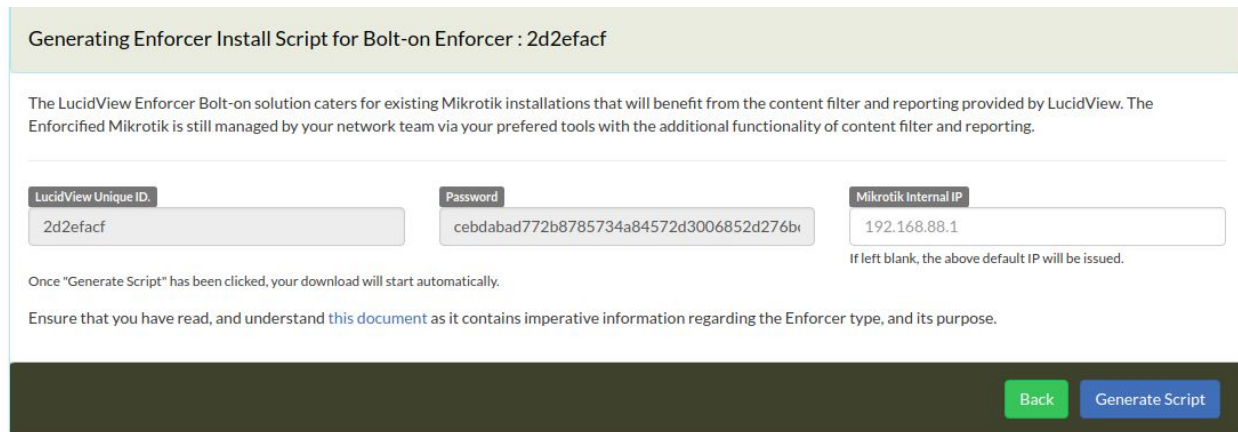
After you have clicked **continue** your Enforcer will appear as example below.



To download the script press the **down arrow**.



When you click the down arrow you will be taken to this page, Click on **Generate**.



When you click Generate script will be downloaded for the MikroTik. Save the file in a place you can easily find. It will be in a format similar to the following, **2d2efac.rsc**, i.e., a unique combination of 8 letters and numbers with the extension .rsc.

APPLY LUCIDVIEW ENFORCER SCRIPT TO MIKROTIK ROUTER

Connecting to the MikroTik Router

Download the winbox application. This is a utility to configure MikroTiks.

<https://mikrotik.com/download>

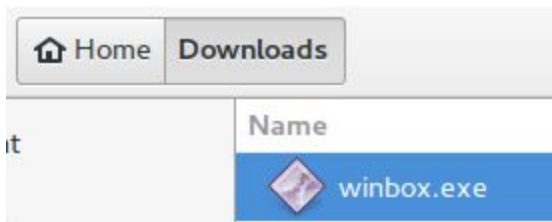


Useful tools and utilities

[Winbox version 3.11](#) Configuration tool for RouterOS

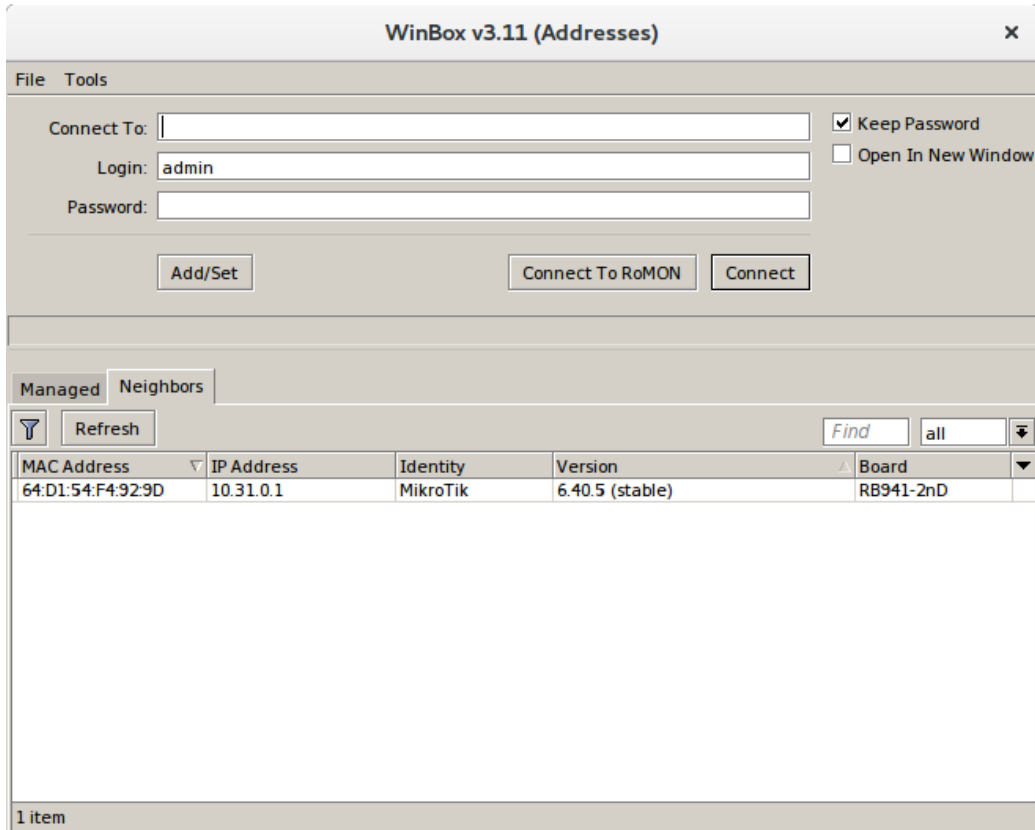
At the date of writing this document, the latest version is [Winbox 3.11](#)

Run the application.



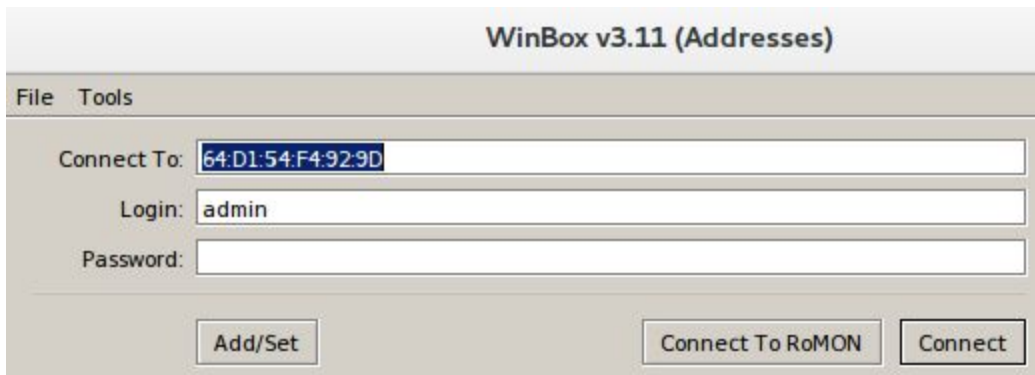
Double click on the application to run it. Windows might ask you permission to run the program.

Connect the MikroTik to your ethernet port on the laptop or desktop computer. Connecting with either the MAC address or IP address is acceptable for the purposes of this guide.



The winbox application should come up as shown above.

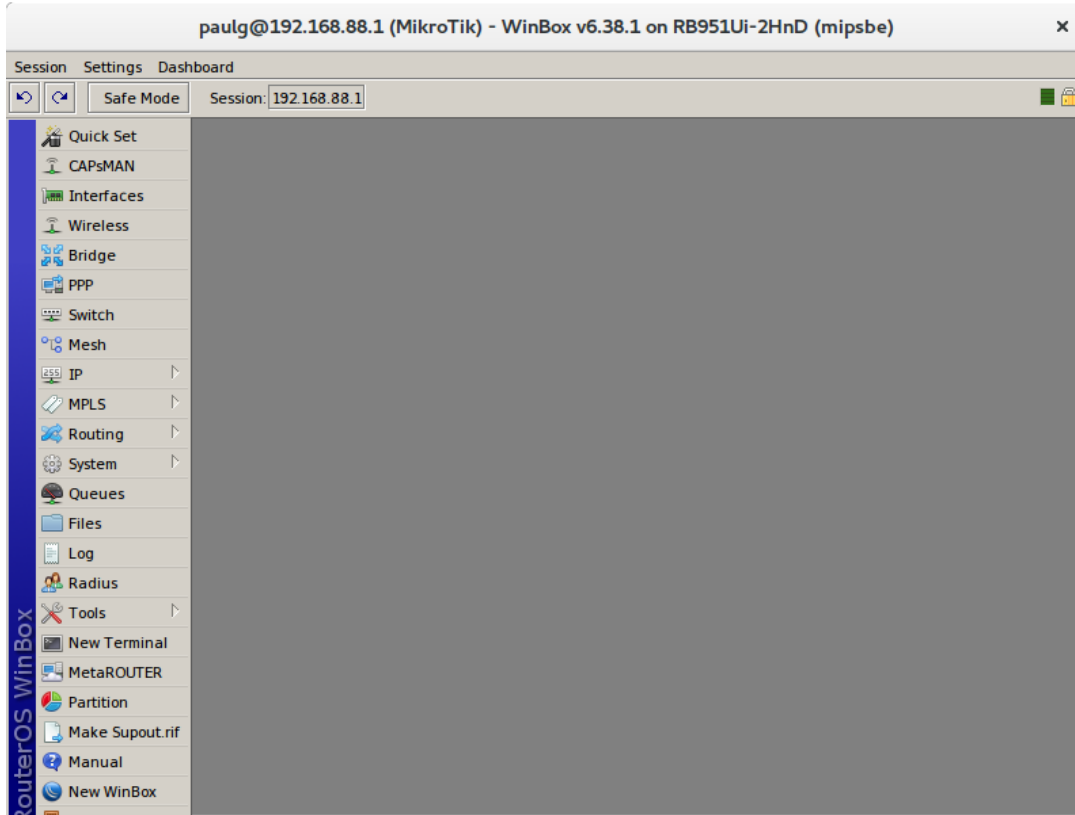
If the MAC address or IP address is not shown in the list give it a few seconds to discover the MikroTik or manually enter the correct IP address and credentials.



Click on the MAC address so it populated the **Connect To** field with the MAC address as shown above.

Use the correct IP address or MAC address for your Mikrotik as well as the appropriate Login username and Password.

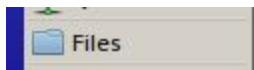
Click **connect**.



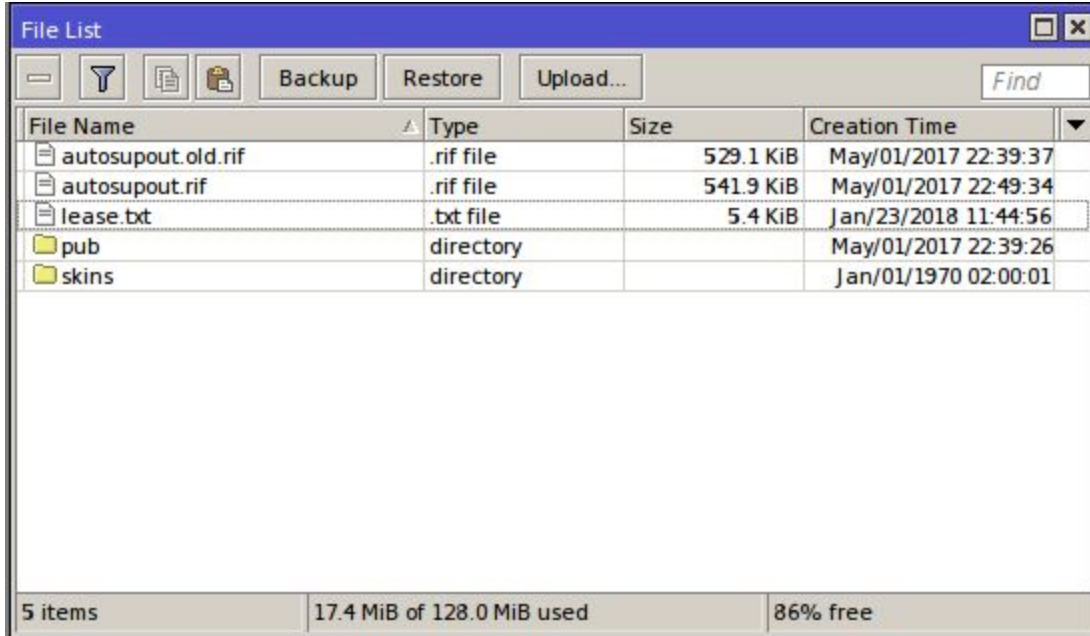
If the window above appears you have successfully opened the configuration interface of the Mikrotik.

UPLOAD THE CONFIGURATION SCRIPT TO THE MIKROTIK ROUTER

Click on the **Files menu icon**. This is files can be uploaded to the Mikrotik.



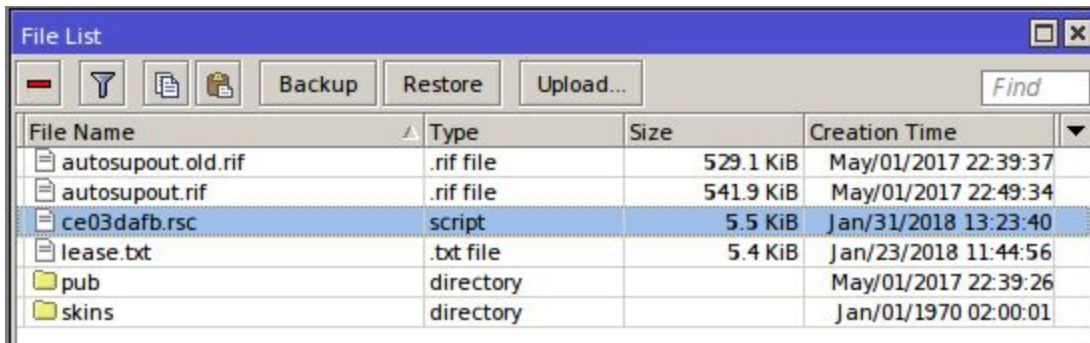
You may see a few files listed already.



File Name	Type	Size	Creation Time
autosupout.old.rif	.rif file	529.1 KiB	May/01/2017 22:39:37
autosupout.rif	.rif file	541.9 KiB	May/01/2017 22:49:34
lease.txt	.txt file	5.4 KiB	Jan/23/2018 11:44:56
pub	directory		May/01/2017 22:39:26
skins	directory		Jan/01/1970 02:00:01

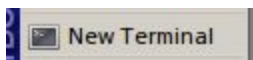
5 items 17.4 MiB of 128.0 MiB used 86% free

Click on the **Upload** button and **upload the file ce03dafb.rsc** (the file with the specific name you downloaded earlier). This is the configuration script allowing the MikroTik to be controlled from the Lucidview Cloud.



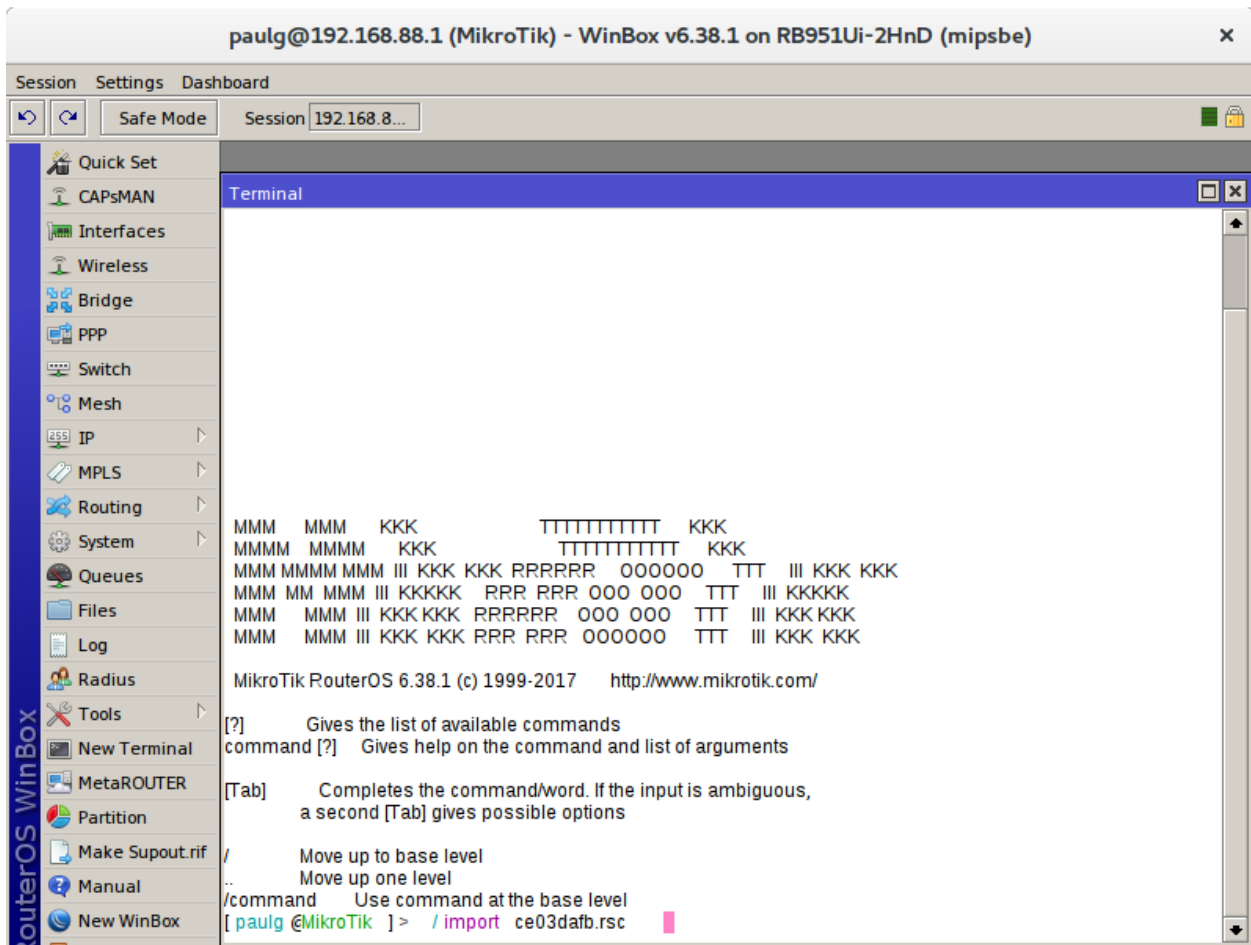
File Name	Type	Size	Creation Time
autosupout.old.rif	.rif file	529.1 KiB	May/01/2017 22:39:37
autosupout.rif	.rif file	541.9 KiB	May/01/2017 22:49:34
ce03dafb.rsc	script	5.5 KiB	Jan/31/2018 13:23:40
lease.txt	.txt file	5.4 KiB	Jan/23/2018 11:44:56
pub	directory		May/01/2017 22:39:26
skins	directory		Jan/01/1970 02:00:01

Click on **New Terminal**.



RUN LUCIDVIEW ENFORCER SCRIPT

This shows you how to run the script to enable the MikroTik to communicate with the LucidView cloud.



Open a new terminal as demonstrated above.

In the terminal execute the command below.

`import ce03dafb.rsc`

(use the filename you downloaded earlier) and press **enter**.

Observe the screen and note any errors. If there are any errors please do contact us for support on support@lucidview.net

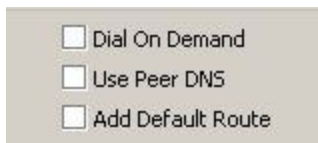
If no errors were observed the MikroTik should be configured and ready to go. Please log on to the LucidView Enforcer portal for this profile and confirm that the portal shows the device is online.

SPECIAL CASES

Existing VPN for Internet access

The above install redirects your LAN DNS traffic to the MikroTik, making your MikroTik router the DNS server for your LAN, which in turn is configured to use the LucidView DNS, over the VPN, as an upstream Forwarder DNS.

However, if you have an existing VPN, be sure to disable “Use Peer DNS” in you existing VPN connection, if it is enabled. See below:

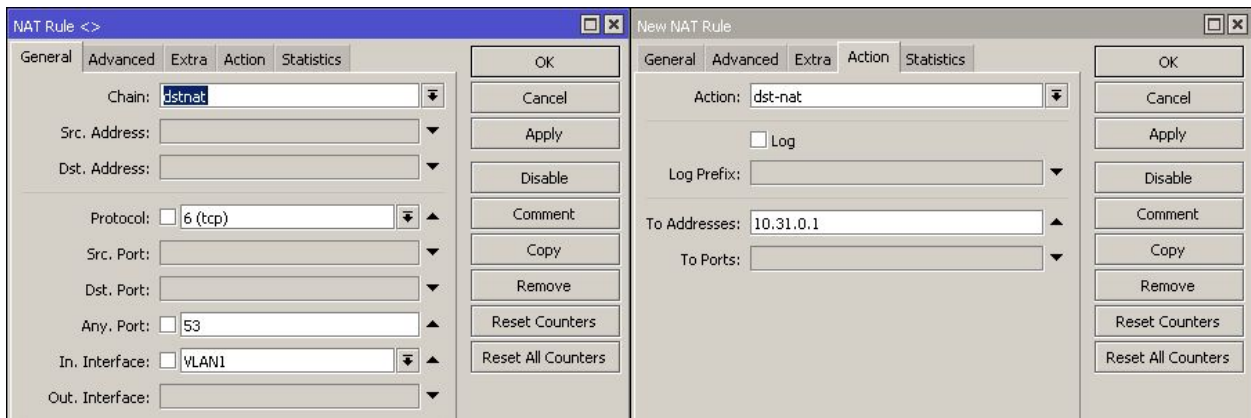


[The following text is severely garbled and appears to be a corrupted scan of a screenshot or document. It is not legible.]

VLANs

If there are VLANs on your MikroTik, consider adding an intercept per VLAN to direct the incoming DNS requests to the IP address of the MikroTik in that VLAN.

For example, if you have a VLAN called VLAN1, with the MikroTik IP on that VLAN configured as 10.31.0.1, add the following rules, one for TCP and another for UDP.



On the left the source, VLAN1, protocol TCP as well as destination port 53 are specified. On the right the action for this rule is a destination nat to the address 10.31.0.1 on Mikrotik.



Two rules will be required for every VLAN. One rule for TCP, and another to handle UDP. Both UDP and TCP are necessary for DNS to work correctly.

```
Q|/æ^Á [cÉ@Á@ÁÁ [Á•&ã^áÁ Á [|^Á&@æá^æÁ Á@Á&ç æÁ&ā Á~]]|ááÁ^Á
c@Á &ãXá, Á|íæÁ
Á
Á
Á
Á
Á      Á
```

Á

TEST THE MIKROTIK

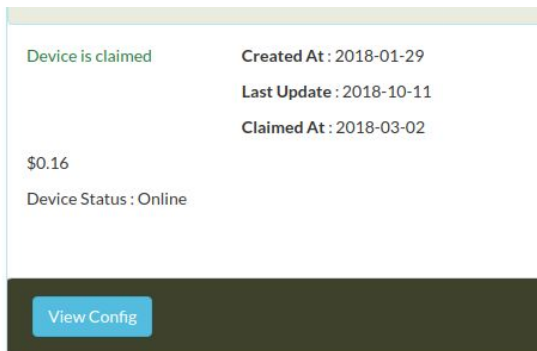
The MikroTik should now be ready for first time use.

Check connectivity of the MikroTik from the LucidView Portal

In order to see if your device is online click on the Enforcer's LucidView ID in the Portal:



You will be directed to your Device Status.



Confirm that the device status indicates Online, without any warnings.

LOGIN TO ENFORCER TO CONFIGURE

Click on **login** to access the Enforcer, and navigate through its menu to configure.

